

RIEZLER

Company presentation



Sportplatzweg 5 ▪ 87471 Durach ▪ Germany
www.riezler.eu

1. Company profile
2. Sales
3. Product portfolio
 - a. Control units
 - b. Software RiVision
 - c. Reels
 - d. Cable drums
 - e. Camera heads
 - f. Compact systems
 - g. Crawler
 - h. Accessories
 - i. Configuration



1. Company profile

2. Sales

3. Product portfolio



RIEZLER Inspektionssysteme is located in the south of Germany - more precisely in the beautiful Allgäu region. There you can find water in many forms: in crystal-clear bathing lakes, in rushing mountain rivers or as snow-white flakes. We are aware of its significance and importance - not only locally, but worldwide.

Therefore we would like to contribute to protect one of the most valuable raw materials of our planet: groundwater.

For more than 25 years in the industry, we as a manufacturer offer a variety of modular camera systems for pipe and sewer inspection for push and crawler use.

Our extremely robust technology is designed for a long service life, easy to operate and delivers excellent, detailed images. Our customers receive high-quality products from our own development and production in Germany. Our service workshop is also located on site and helps quickly and cost-effectively in the event of damage.

The corporate policy of our family business is as follows:
 Customer loyalty through trust, expert advice, the best possible quality,
 exemplary service and all this at a fair price.

1. Company profile

2. Sales

3. Product portfolio

As early as 1978 Karl-Heinz Riezler founded one of the first companies in the world to offer products for sewer inspection: RICO (Riezler & Company)

In fourteen years he accumulated an enormous knowledge and passion for this industry. This culminated in the founding of RIEZLER Electronic in 1992.

In order to continue the family business in the second generation, the son of Karl-Heinz Riezler, Sebastian Riezler, took over the company management in 2006.

In 2010 the company name was changed, since then we are officially active as RIEZLER Inspektionssysteme GmbH & Co.KG.

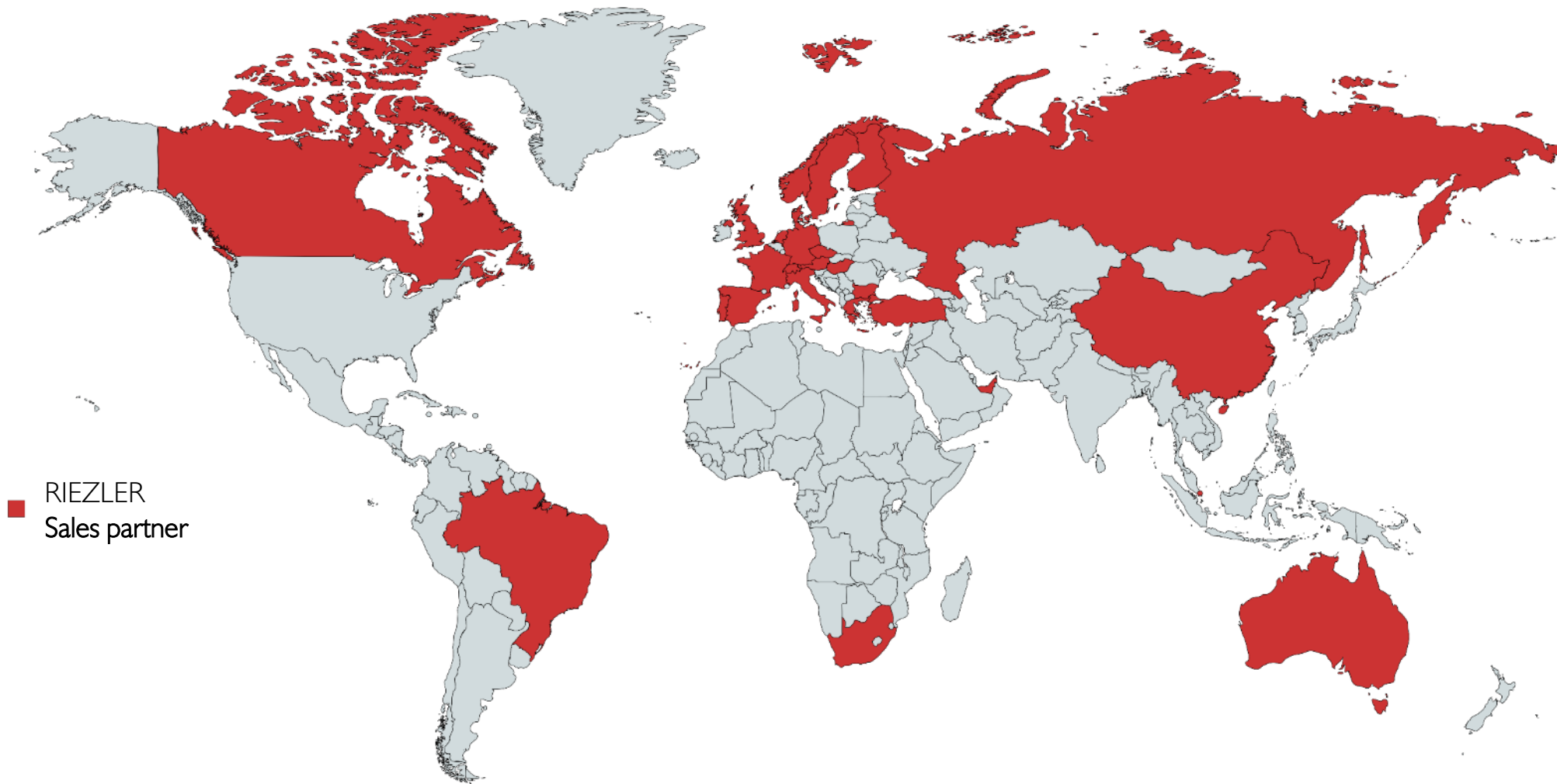
1. Company profile

2. Sales

3. Product portfolio



- 1. Company profile
- 2. Sales**
- 3. Product portfolio



RIEZLER

Product portfolio



Perfectly matched for every application and compatible with all our cameras, cable drums, crawler and sliding systems.

- 1. Company profile
- 2. Sales
- 3. Product portfolio**
 - a. Control units**
 - b. RiVision
 - c. Camera heads
 - d. Reels
 - e. Cable drums
 - f. Compact systems
 - g. Crawler
 - h. Accessories
 - i. Configuration



MSE-100



MSE-300



MSE-400



MSE-500

- 1. Company profile
- 2. Sales
- 3. Product portfolio**
 - a. Control units**
 - b. RiVision
 - c. Camera heads
 - d. Reels
 - e. Cable drums
 - f. Compact systems
 - g. Crawler
 - h. Accessories
 - i. Configuration



MSE-100



MSE-300

- Thanks to high-resolution, daylight suitable TFT displays, our MSE-100 and MSE-300 control units always offer a brilliant image. In addition, they are equipped with ergonomically arranged control elements, which enable pleasant working conditions.
- Video and image recordings are stored on SD card (supports up to 32 GB SD cards).
- Both control units are compatible to all our camera heads, reels and manual cable drums.

- 1. Company profile
- 2. Sales
- 3. Product portfolio**
 - a. Control units**
 - b. RiVision
 - c. Camera heads
 - d. Reels
 - e. Cable drums
 - f. Compact systems
 - g. Crawler
 - h. Accessories
 - i. Configuration



MSE-400



MSE-500

- The MSE-400 and MSE-500 also feature high-resolution, daylight-ready TFT displays and ergonomically arranged operating elements. What sets them apart from the smaller control units, however, is not only the significantly larger displays, but above all our self-developed software RiVision.
- The MSE-400 and MSE-500 also feature high-resolution, daylight-suitable TFT displays and ergonomically arranged control elements. What sets them apart from the smaller control units, however, is not only the significantly larger displays, but our self-developed software RiVision.
- The MSE-400 is compatible with all our camera heads, reels and manual cable drums. The MSE-500 can also control automatic cable drums and crawlers.

1. Company profile

2. Sales

3. Product portfolio

a. Control units

b. RiVision

c. Camera heads

d. Reels

e. Cable drums

f. Compact
systems

g. Crawler

h. Accessories

i. Configuration

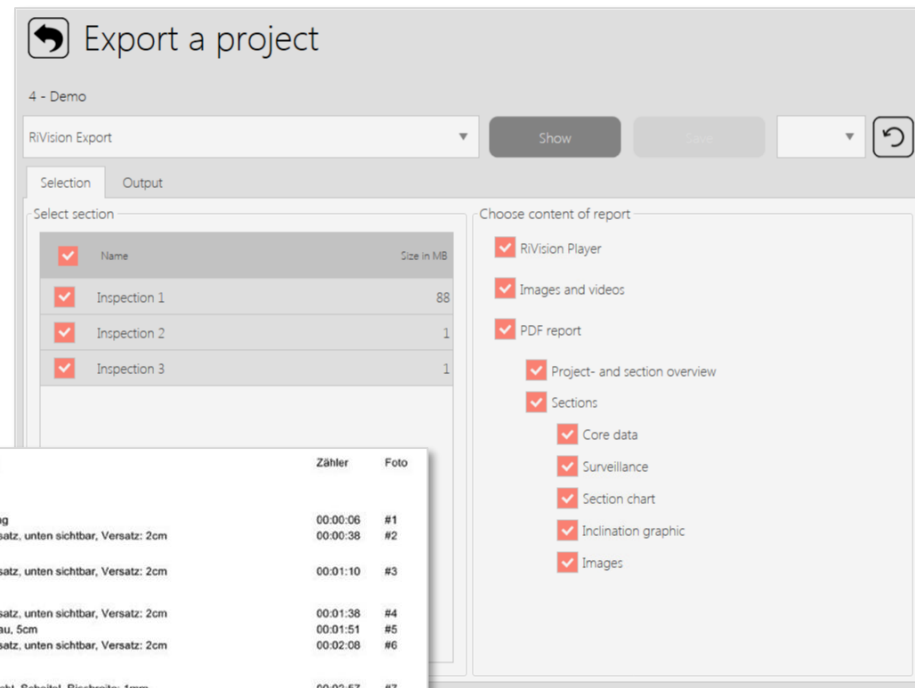
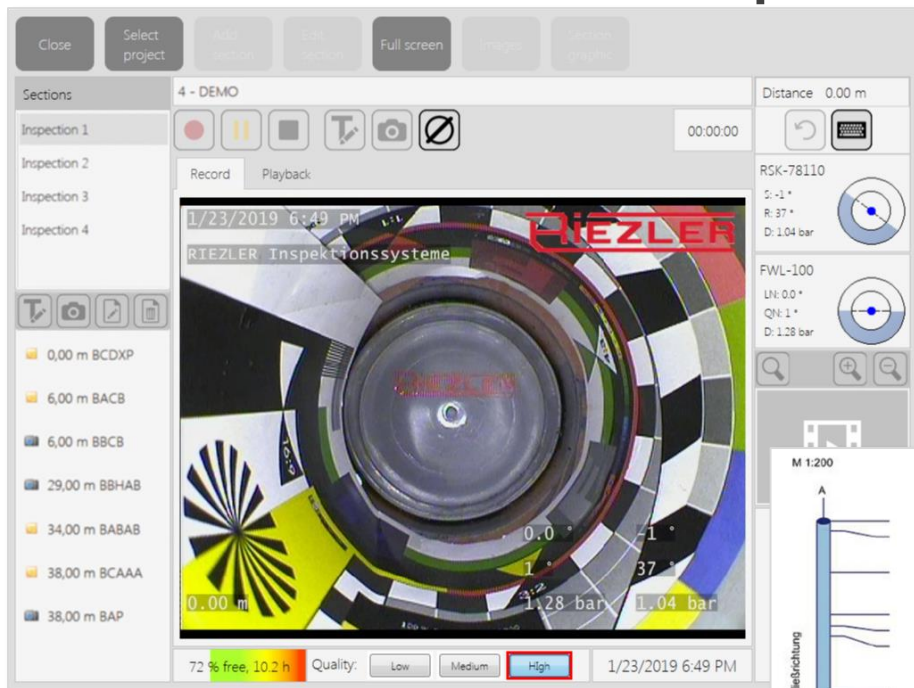


Our innovative software RiVision is self-developed and enables not only the **management of projects**, but also the **recording of videos and images**. In addition, it offers

important monitoring functions for system components in use. Inspections can then be output directly as PDF reports or exported to USB media. The exported data is **compatible with WinCan vX**.

As RiVision is constantly in further developed, we always provide our customers with complimentary software updates. This ensures that the software always meets the latest requirements and offers new functions.

1. Company profile
2. Sales
- 3. Product portfolio**
 - a. Control units
 - b. RiVision**
 - c. Camera heads
 - d. Reels
 - e. Cable drums
 - f. Compact systems
 - g. Crawler
 - h. Accessories
 - i. Configuration



M 1:200	Distanz	Code	Beobachtung	Zähler	Foto
	0,00 m	HA	Halteungsanfang	00:00:06	#1
	0,48 m	LV-U	Vertikaler Versatz, unten sichtbar, Versatz: 2cm	00:00:38	#2
	2,51 m	LV-U	Vertikaler Versatz, unten sichtbar, Versatz: 2cm	00:01:10	#3
	4,57 m	LV-U	Vertikaler Versatz, unten sichtbar, Versatz: 2cm	00:01:38	#4
	5,13 m	W-S	Wasserrückstau, 5cm	00:01:51	#5
	5,62 m	LV-U	Vertikaler Versatz, unten sichtbar, Versatz: 2cm	00:02:08	#6
	8,24 m	RLFO	Längsriss, feucht, Scheitel, Rissbreite: 1mm	00:02:57	#7
	8,73 m	LV-U	Vertikaler Versatz, unten sichtbar, Versatz: 2cm	00:03:15	#8
	10,12 m	SEBO	Einragender Stutzen, Boden sichtbar, Scheitel, Einragend: 5cm	00:03:46	#9
	10,53 m	RLFL	Längsriss, feucht, linker Kämpfer, Rissbreite: 2mm, von 8 Uhr bis 9 Uhr	00:04:04	#10
	11,73 m	LV-U	Vertikaler Versatz, unten sichtbar, Versatz: 2cm	00:04:47	#11
	11,73 m	RC-R	Riss im Verbindungsbereich, rechter Kämpfer, Rissbreite: 1mm, von 4 Uhr bis 5 Uhr	00:05:01	#12
	14,19 m	A-R	Abzweig, rechter Kämpfer, von 2 Uhr bis 3 Uhr	00:05:08	#13
	15,50 m	LV-U	Vertikaler Versatz, unten sichtbar, Versatz: 2cm	00:05:52	#14
	22,86 m	W-S	Wasserrückstau, 5cm	00:06:57	#15
	24,00 m	LV-U	Vertikaler Versatz, unten sichtbar, Versatz: 2cm	00:07:27	#16
	27,13 m	LV-U	Vertikaler Versatz, unten sichtbar, Versatz: 2cm	00:08:05	#17
	28,17 m	LV-U	Vertikaler Versatz, unten sichtbar, Versatz: 2cm	00:08:26	#18
	29,20 m	RC-L	Riss im Verbindungsbereich, linker Kämpfer, Rissbreite: 2mm, von 7 Uhr bis 8 Uhr	00:08:51	#19
	29,52 m	EH	Halteungsende	00:09:13	#20

RI VISION report

Enables the creation of inspection reports with country-specific damage catalogs. This allows observations to be documented in accordance with standards. Thanks to convenient list functions (observation catalogue, most frequently used / last observations) and direct shortcut input, this is done in no time at all. The exported data is **compatible with WinCan vX**. Damage catalogs are available for the following countries:

<u>Australia</u>	05-2008 (WSA)	<u>Great Britain</u>	MSCC-4 (WRC)	<u>Singapore</u>	MSCC-3 (WRC)
	2013 (WSA)		MSCC-5 (WRC)	<u>Spain</u>	SPA (EN I 3508)
<u>Germany</u>	ATV-M143	<u>Italy</u>	ITA (EN I 3508)	<u>Czech Republic</u>	CES (EN I 3508)
	ISYBAU-2006	<u>Norway</u>	RAPPORT-145		
	ISYBAU-2001	<u>Portugal</u>	POR (EN I 3508)		
	ISYBAU-96	<u>Romania</u>	ISYBAU-96		
	DWA-M149	<u>Sweden</u>	P93		
<u>Denmark</u>	DANDAS		T25		
<u>France</u>	FRE (EN I 3508)	<u>Switzerland</u>	VSA (EN I 3508)		



- 1. Company profile
- 2. Sales
- 3. Product portfolio**
 - a. Control units
 - b. RiVision**
 - c. Camera heads
 - d. Reels
 - e. Cable drums
 - f. Compact systems
 - g. Crawler
 - h. Accessories
 - i. Configuration

RI VISION **inclination**

In combination with our crawlers FWL-100 and FWL-150, this additional module enables the creation of inclination graphics in reports. In addition to continuous elevation and inclination values, average values are automatically calculated and displayed.

1. Company profile

2. Sales

3. Product portfolio

a. Control units

b. RiVision

c. Camera heads

d. Reels

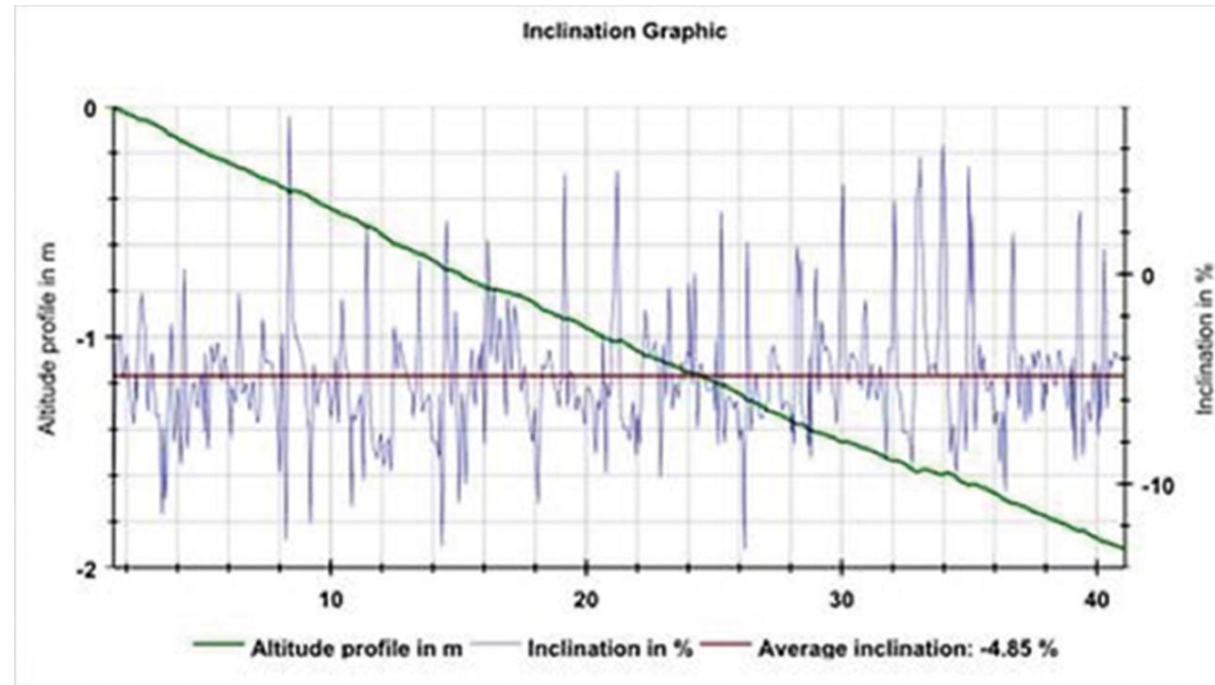
e. Cable drums

f. Compact systems

g. Crawler

h. Accessories

i. Configuration



RI VISION measurement

This additional module helps you to exploit the full potential of our pan and tilt cameras with integrated parallel lasers. It enables precise measurements of crack widths and point deformations. At the touch of a button, it can also independently determine pipe diameters.

1. Company profile

2. Sales

3. Product portfolio

a. Control units

b. RiVision

c. Camera heads

d. Reels

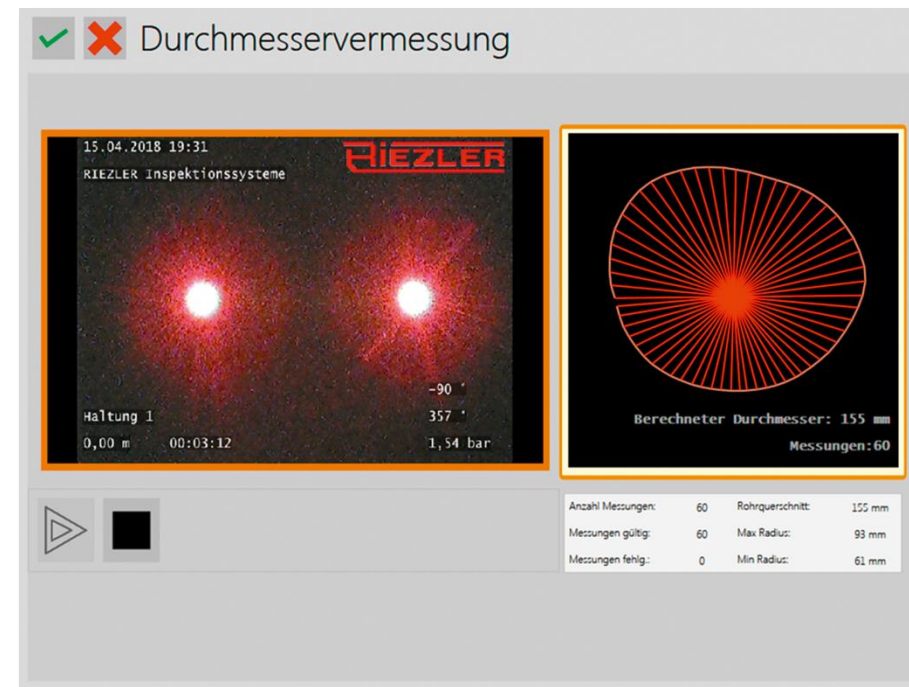
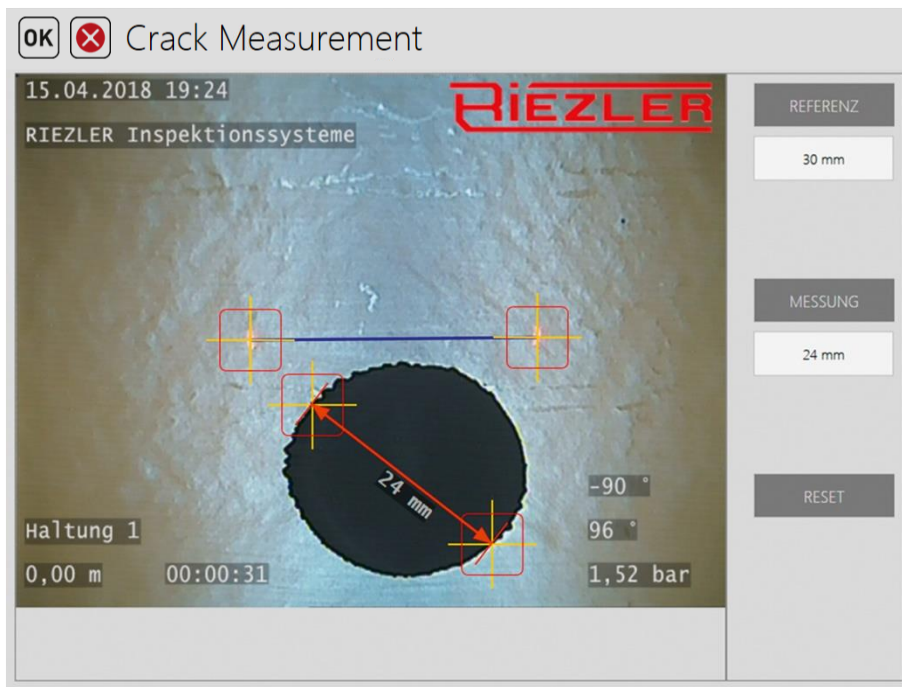
e. Cable drums

f. Compact systems

g. Crawler

h. Accessories

i. Configuration



The right camera for every application and every diameter

1. Company profile

2. Sales

3. Product portfolio

a. Control units

b. RiVision

c. Camera heads

d. Reels

e. Cable drums

f. Compact systems

g. Crawler

h. Accessories

i. Configuration



RIK-1820



RIK-3240(/RO)



RIK-45



RIK-5570



RSK-60



RSK-78



RZK-115

1. Company profile

2. Sales

3. Product portfolio

a. Control units

b. RiVision

c. Camera heads

d. Reels

e. Cable drums

f. Compact systems

g. Crawler

h. Accessories

i. Configuration



RIK-1820

AXIAL-COLOUR-TV-CAMERA

- useable from DN 20 to DN 70
- suitable for bends as of 87° / DN 40



RIK-3240(/RO)

AXIAL-COLOUR-TV-CAMERA

- useable from DN 40 to DN 150
- suitable for bends as of 87° / DN 50
- permanent upright picture (RO version only)

1. Company profile

2. Sales

3. Product portfolio

a. Control units

b. RiVision

c. Camera heads

d. Reels

e. Cable drums

f. Compact systems

g. Crawler

h. Accessories

i. Configuration



RIK-45

AXIAL-COLOUR-TV-CAMERA

- usable from DN 50 to DN 400
- suitable for bends as of 87° / DN 90
- permanent upright picture



RIK-5570

AXIAL-COLOUR-TV-CAMERA

- usable from DN 70 to DN 400
- suitable for bends as of 87° / DN 100
- permanent upright picture

1. Company profile

2. Sales

3. Product portfolio

a. Control units

b. RiVision

c. Camera heads

d. Reels

e. Cable drums

f. Compact
systems

g. Crawler

h. Accessories

i. Configuration



RSK-60

PAN AND TILT-COLOUR-TV-CAMERA

- useable from DN 70 to DN 300
- suitable for bends as of 87° / DN 100
- permanent upright picture
- parallel laser for measurement functions



RSK-78

PAN AND TILT-COLOUR-TV-CAMERA

- useable from DN 100 to DN 300
- suitable for bends as of 87° / DN 100
- permanent upright picture

1. Company profile

2. Sales

3. Product portfolio

a. Control units

b. RiVision

c. Camera heads

d. Reels

e. Cable drums

f. Compact
systems

g. Crawler

h. Accessories

i. Configuration



RZK-115

PAN AND TILT-COLOUR-TV-ZOOM-CAMERA

- useable from DN 150 to DN 2000
- 10-times optical / 32-times digital zoom
- permanent upright picture
- parallel laser for measurement functions

Lightweight yet robust professional reels for the comfortable use of push systems

1. Company profile

2. Sales

3. Product portfolio

a. Control units

b. RiVision

c. Camera heads

d. Reels

e. Cable drums

f. Compact systems

g. Crawler

h. Accessories

i. Configuration



HKT-5X



SHP-6X



SHP-9M



SHP-9X

1. Company profile

2. Sales

3. Product portfolio

a. Control units

b. RiVision

c. Camera heads

d. Reels

e. Cable drums

f. Compact systems

g. Crawler

h. Accessories

i. Configuration



HKT-5X

MINI-REEL

- usable from DN 20 to DN 100
- suitable for bends as of 87° / DN 40
- stable plastic cable drum
- 15 meter / 49.2 ft high-flexible push cable (5 mm / 0.20 inch Ø)



SHP-6X

REEL

- usable from DN 20 to DN 150
- suitable for bends as of 87° / DN 50
- steady, powder-coated steel reel
- 30 meter / 98.4 feet high-flexible fibreglass cable (6 mm / 0.24 inch Ø)

1. Company profile

2. Sales

3. Product portfolio

a. Control units

b. RiVision

c. Camera heads

d. Reels

e. Cable drums

f. Compact systems

g. Crawler

h. Accessories

i. Configuration



SHP-9M



SHP-9X

REEL

- usable from DN 50 to 400
- suitable for bends as of 87° / DN 90
- steady, powder-coated steel reel
- 40 meter (131 feet) high-flexible push cable (9 mm / 0.35 inch Ø)

PROFI- REEL

- usable from DN 50 to 400
- suitable for bends as of 87° / DN 90
- steady, powder-coated steel reel
- 60 / 80 meter (197 / 262 feet) high-flexible push cable (9 mm / 0.35 inch Ø)

- 1. Company profile
- 2. Sales
- 3. Product portfolio**
 - a. Control units
 - b. RiVision
 - c. Camera heads
 - d. Reels
 - e. Cable drums**
 - f. Compact systems
 - g. Crawler
 - h. Accessories
 - i. Configuration

Manual and automatic cable drums for crawler systems



KTM-7X (150)



KTM-7X (250)



KTA-250

1. Company profile

2. Sales

3. Product portfolio

a. Control units

b. RiVision

c. Camera heads

d. Reels

e. Cable drums

f. Compact systems

g. Crawler

h. Accessories

i. Configuration



KTM-7X (150)



KTM-7X (250)

MANUAL CABLE DRUM

- stable cable drum with stainless steel frame
- up to 150 meters / 492 ft extremely stable camera cable with Kevlar reinforcement, abrasion and acid resistant
- integrated digital meter counter

MANUAL CABLE DRUM

- stable cable drum with stainless steel frame
- up to 250 meters / 820 ft extremely stable camera cable with Kevlar reinforcement, abrasion and acid resistant
- integrated digital meter counter

1. Company profile

2. Sales

3. Product portfolio

a. Control units

b. RiVision

c. Camera heads

d. Reels

e. Cable drums

f. Compact systems

g. Crawler

h. Accessories

i. Configuration



KTA-250

AUTOMATIC CABLE DRUM

- automatic cable routing
- control unit integrated in cable drum
- 150 - 250 meters / 492 - 820 ft extremely stable camera cable with Kevlar reinforcement, abrasion resistant and acid resistant
- crawler synchronization or manual operation
- infinitely variable traction force
- meter counter with incremental encoder and outlet roller

Perfectly matched compact systems for different requirement profiles

- 1. Company profile
- 2. Sales
- 3. Product portfolio**
 - a. Control units
 - b. RiVision
 - c. Camera heads
 - d. Reels
 - e. Cable drums
 - f. Compact systems**
 - g. Crawler
 - h. Accessories
 - i. Configuration



SHP-6X
with MSE-100



SHP-9M
with MSE-100



SHP-9X
with MSE-100



SHP-9X
with MSE-300



SHP-9X
with MSE-400

Thanks to all-wheel drive and high tractive power, you can even reach remote places

1. Company profile

2. Sales

3. Product portfolio

a. Control units

b. RiVision

c. Camera heads

d. Reels

e. Cable drums

f. Compact systems

g. Crawler

h. Accessories

i. Configuration



FWL-100



FWL-150

1. Company profile

2. Sales

3. Product portfolio

a. Control units

b. RiVision

c. Camera heads

d. Reels

e. Cable drums

f. Compact systems

g. Crawler

h. Accessories

i. Configuration



FWL-100

Crawler

- usable from DN 100 to DN 600
- 6 powered wheels and steerable
- Modular design and accessories make it adaptable to a wide range of requirements



FWL-150

Crawler

- usable from DN 150 to DN 1200
- 8 powered wheels and steerable
- Modular design and accessories make it adaptable to a wide range of requirements

- 1. Company profile
- 2. Sales
- 3. Product portfolio**
 - a. Control units
 - b. RiVision
 - c. Camera heads
 - d. Reels
 - e. Cable drums
 - f. Compact systems
 - g. Crawler**
 - h. Accessories
 - i. Configuration

Configuration examples



A large selection of useful accessories for our camera and crawler systems

- 1. Company profile
- 2. Sales
- 3. Product portfolio**
 - a. Control units
 - b. RiVision
 - c. Camera heads
 - d. Reels
 - e. Cable drums
 - f. Compact systems
 - g. Crawler
 - h. Accessories**
 - i. Configuration



Guiding sleeves



Guiding brushes



Skids



Locating sender



Additional lighting



Wheels



Transport bags



Tripods

1. Company profile

2. Sales

3. Product portfolio

a. Control units

b. RiVision

c. Camera heads

d. Reels

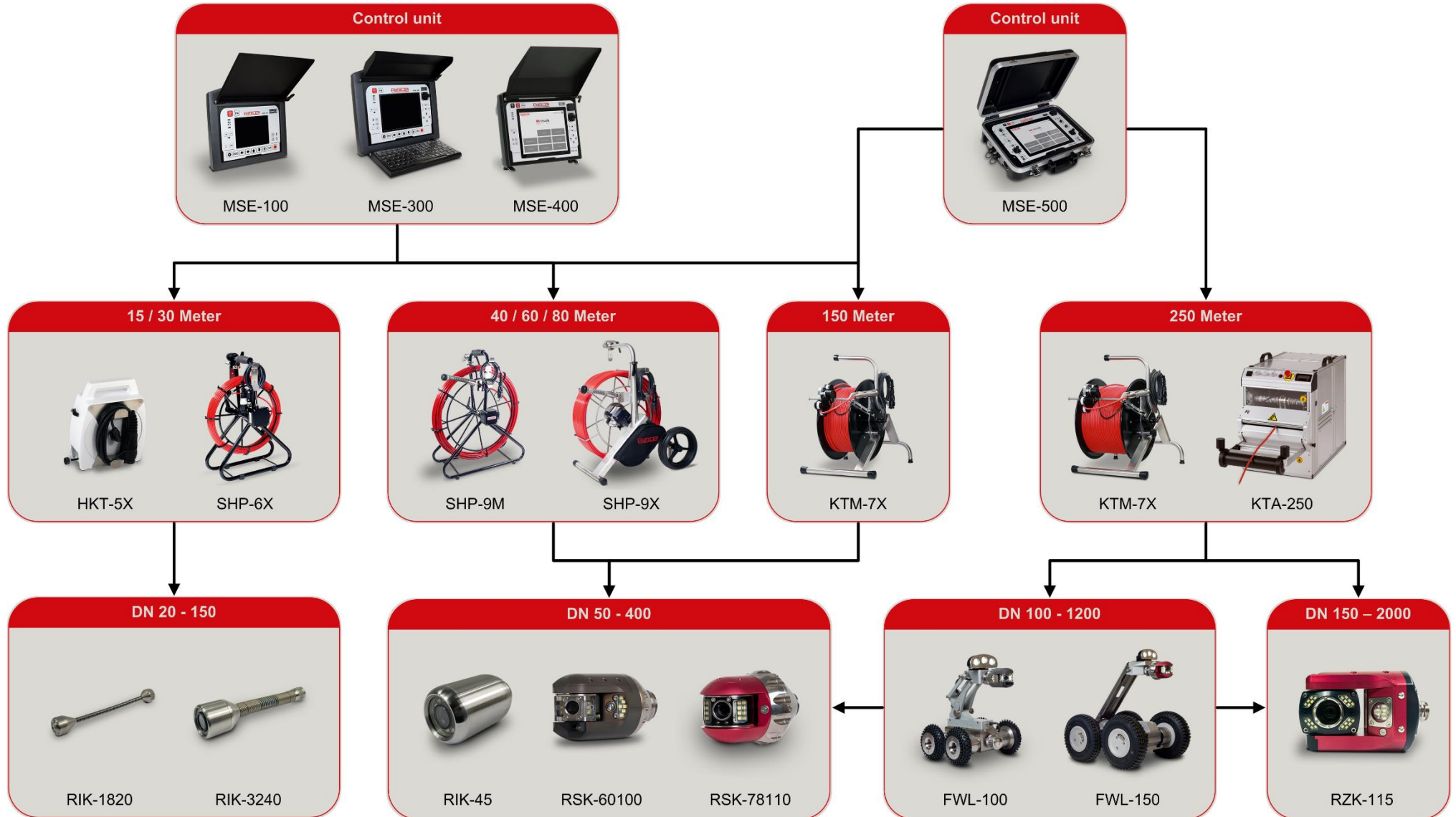
e. Cable drums

f. Compact systems

g. Crawler

h. Accessories

i. Configuration



RIEZLER



Sportplatzweg 5 ■ 87471 Durach ■ Germany
www.riezler.eu